

E•QUAL

EMERGENCY
QUALITY
NETWORK

Sepsis Wave II

New recommendations from the Surviving Sepsis Campaign and what do they mean for the ED

How to use the E-QUAL Portal and submit Activity 2

TCPi | Transforming Clinical
Practices Initiative

 American College of
Emergency Physicians®

ADVANCING EMERGENCY CARE 

Presenters



Laura Evans, MD
MSc



Tiffany Osborn, MD,
MPH



Arjun Venkatesh, MD,
MBA, MHS

Surviving Sepsis Campaign: International Guidelines for Management of Sepsis and Septic Shock: 2016

Surviving Sepsis Campaign

Society of
Critical Care Medicine
The Intensive Care Professionals



The Intensive Connection

COI Disclosures

- No financial conflicts to disclose

Outline

- Review key elements of 2016 Surviving Sepsis Guidelines
- Focus on:
 - Early identification
 - Initial management

CONFERENCE REPORTS AND EXPERT PANEL



Surviving Sepsis Campaign: International Guidelines for Management of Sepsis and Septic Shock: 2016

Andrew Rhodes^{1*}, Laura E. Evans², Waleed Alhazzani³, Mitchell M. Levy⁴, Massimo Antonelli⁵, Ricard Ferrer⁶, Anand Kumar⁷, Jonathan E. Sevransky⁸, Charles L. Sprung⁹, Mark E. Nunnally², Bram Rochwerg³, Gordon D. Rubenfeld¹⁰, Derek C. Angus¹¹, Djillali Annane¹², Richard J. Beale¹³, Geoffrey J. Bellinghan¹⁴, Gordon R. Bernard¹⁵, Jean-Daniel Chiche¹⁶, Craig Coopersmith⁸, Daniel P. De Backer¹⁷, Craig J. French¹⁸, Seitaro Fujishima¹⁹, Herwig Gerlach²⁰, Jorge Luis Hidalgo²¹, Steven M. Hollenberg²², Alan E. Jones²³, Dilip R. Karnad²⁴, Ruth M. Kleinpell²⁵, Younsuk Koh²⁶, Thiago Costa Lisboa²⁷, Flavia R. Machado²⁸, John J. Marini²⁹, John C. Marshall³⁰, John E. Mazuski³¹, Lauralyn A. McIntyre³², Anthony S. McLean³³, Sangeeta Mehta³⁴, Rui P. Moreno³⁵, John Myburgh³⁶, Paolo Navalesi³⁷, Osamu Nishida³⁸, Tiffany M. Osborn³¹, Anders Perner³⁹, Colleen M. Plunkett²⁵, Marco Ranieri⁴⁰, Christa A. Schorr²², Maureen A. Seckel⁴¹, Christopher W. Seymour⁴², Lisa Shieh⁴³, Khalid A. Shukri⁴⁴, Steven Q. Simpson⁴⁵, Mervyn Singer⁴⁶, B. Taylor Thompson⁴⁷, Sean R. Townsend⁴⁸, Thomas Van der Poll⁴⁹, Jean-Louis Vincent⁵⁰, W. Joost Wiersinga⁴⁹, Janice L. Zimmerman⁵¹ and R. Phillip Dellinger²²

© 2017 SCCM and ESICM

Sepsis-3 Definitions

- ***Sepsis***: Life-threatening organ dysfunction caused by dysregulated host response to infection
- ***Septic Shock***: Subset of sepsis with circulatory and cellular/metabolic dysfunction associated with higher risk of mortality

JAMA. 2016;315(8):801-810. doi:10.1001/jama.2016.0287

SSC Guidelines and Sepsis-3 Definitions

- **“Sepsis”** in place of **“Severe Sepsis”**
- Sepsis-3 clinical criteria (i.e. qSOFA) were not used in studies that informed the recommendations in this revision
 - Could not comment on use of Sepsis-3 clinical criteria

JAMA. 2016;315(8):801-810. doi:10.1001/jama.2016.0287

SSC Guideline Process

- PICO Question Review and Development
- Literature searches
 - Minimum of 2 major databases
 - Assistance from professional librarians
- Generation of evidence profiles
- Grading of recommendations
 - GRADE
- Voting
 - 80% agreement required
- Reformulation and re-voting as needed

Best Practice Statements

- Strong but ungraded statements
- Use defined criteria

Criteria for Best Practice Statements

Is the statement clear and actionable?

Is the message necessary?

Is the net benefit (or harm) unequivocal?

Is the evidence difficult to collect and summarize?

Is the rationale explicit?

Is the statement better if formally GRADEd?

Prose GRADE descriptions

	2016 Descriptor	2012 Descriptor
Strength	Strong Weak	1 2
Quality	High Moderate Low Very Low	A B C D
Ungraded Strong Recommendation	Best Practice Statement	Ungraded Strong Recommendation

Implications of the strength of a recommendation

	Strong Recommendation	Weak Recommendation
For patients	Most individuals would want the recommended course of action. A small proportion would not.	The majority of individuals would want the suggested course of action but many would not.
For clinicians	Most individuals should receive the recommended course of action.	Different choices are likely to be appropriate for different patients and therapy should be tailored to the individual patient's circumstances.
For policy makers	The recommendation can be adapted as policy in most situations, including use as performance indicators	Policy-making will require substantial debates and involvement of many stakeholders.

Recommendations

- 93 Recommendations
 - 32 **Strong** recommendations: “*We recommend*”
 - 39 **Weak** recommendations: “*We suggest*”
 - 18 Best Practice Statements
 - No recommendation provided for 4 PICO questions

Screening For Sepsis And Performance Improvement

**We recommend that hospitals and hospital systems have a performance improvement program for sepsis including sepsis screening for acutely ill, high-risk patients.
(Best Practice Statement)**

Sepsis Performance Improvement

- Performance improvement efforts for sepsis are associated with improved patient outcomes
- A recent meta-analysis of 50 observational studies:
 - Performance improvement programs associated with a significant increase in compliance with the SSC bundles and a reduction in mortality (OR 0.66; 95% CI 0.61-0.72)

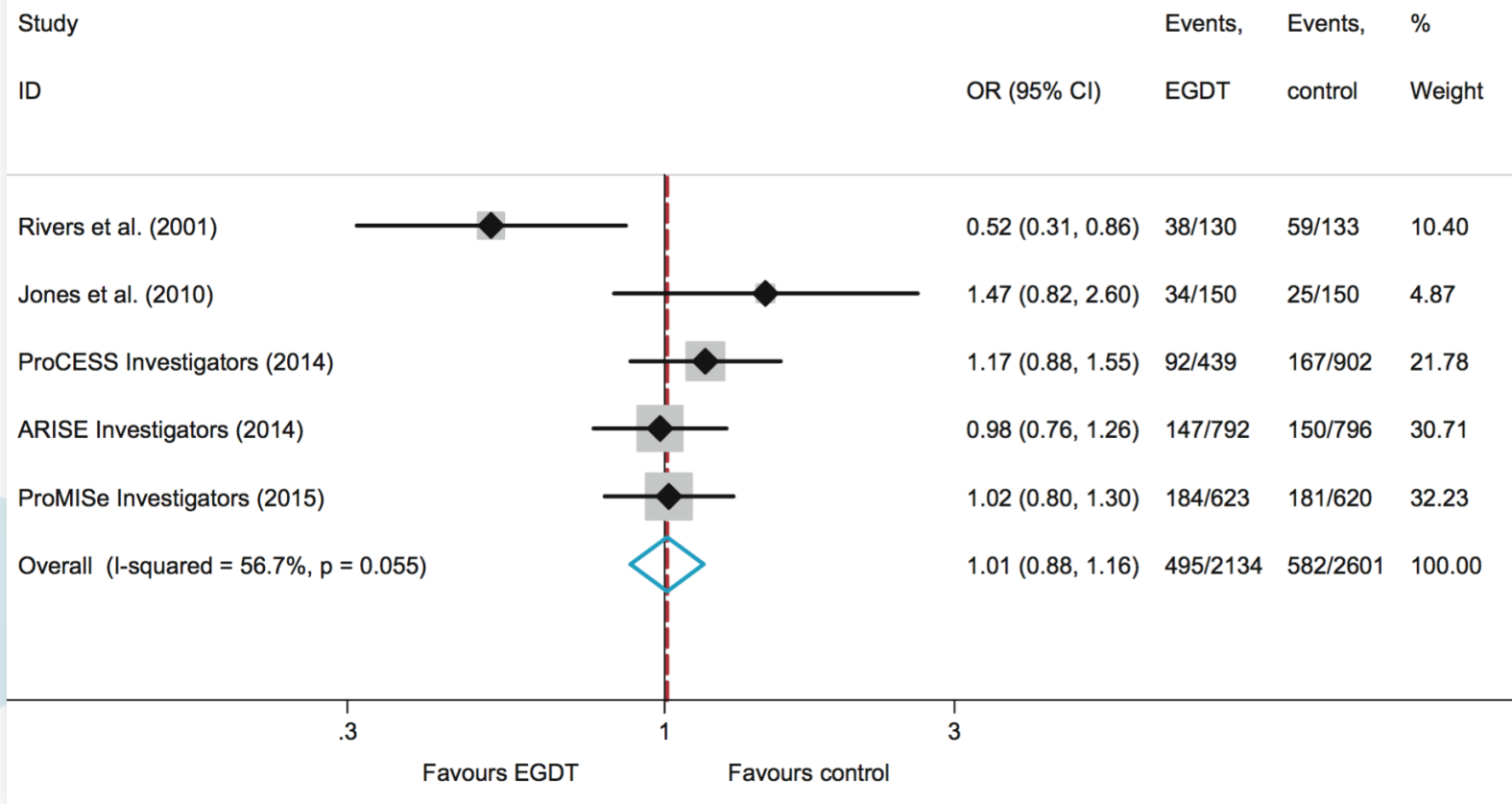
2012 Recommendation for Initial Resuscitation.

We recommend the **protocolized**, quantitative resuscitation of patients with sepsis- induced tissue hypoperfusion. During the first 6 hours of resuscitation, the **goals of initial resuscitation should include all** of the following as a part of a treatment protocol:

- a) CVP 8–12 mm Hg
- b) MAP \geq 65 mm Hg
- c) Urine output \geq 0.5 mL/kg/hr
- d) Scvo2 \geq 70%.

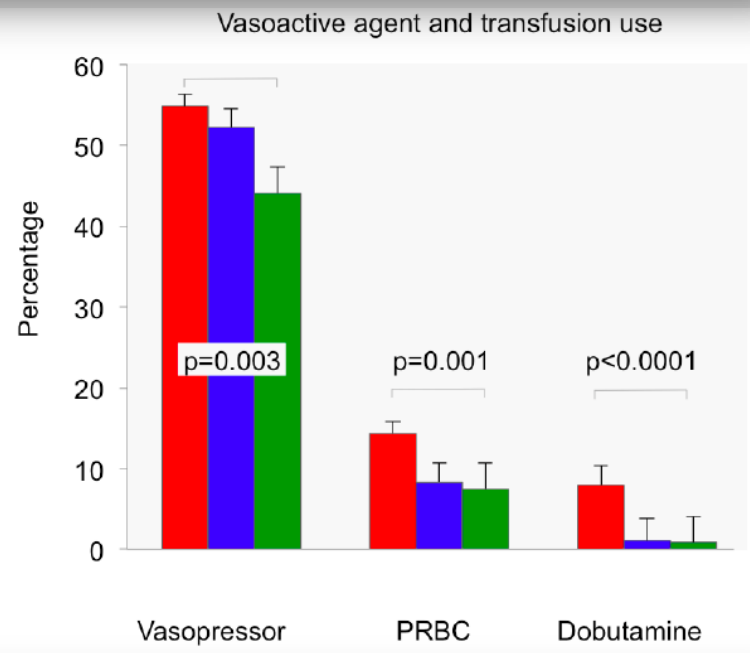
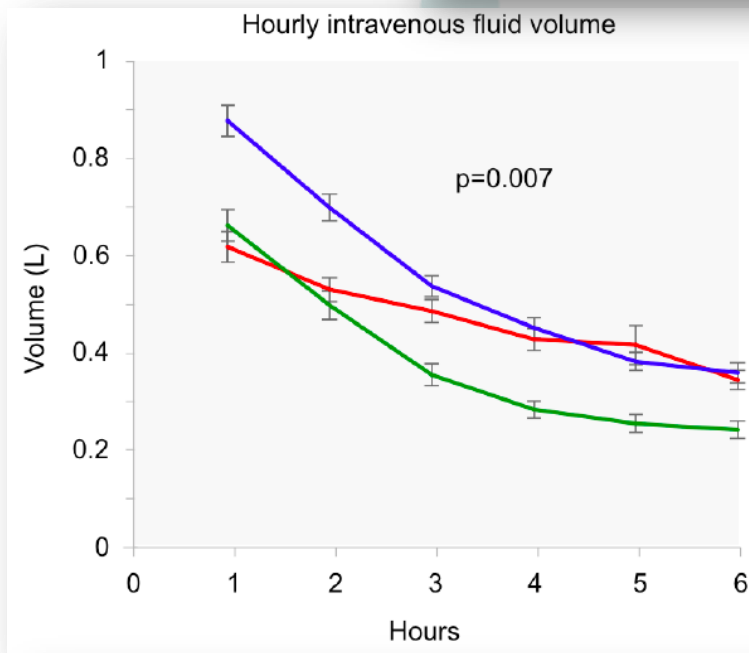
A systematic review and meta-analysis of early goal-directed therapy for septic shock: the ARISE, ProCESS and ProMiSe Investigators

A Primary mortality outcome of each study



A Randomized Trial of Protocol-Based Care for Early Septic Shock

The ProCESS Investigators*



■ Protocol-based EGDT
 ■ Protocol-based Standard Therapy
 ■ Usual care

Intravenous Fluids	
EGDT	2.8 L
Usual Care	2.3 L

Intravenous Antibiotics	
EGDT	97.5%
Usual Care	96.9%

Caveats / Limitations of ProCESS, ARISE & Promise

- The overall management of sepsis has changed...
 - In all three studies patients had early antibiotics, and approximately 30ml/kg of intravenous fluid prior to randomization.
- We need therefore to be very careful about over interpreting the results in areas where this paradigm is not valid.

The River's work was useful....

- Provided us a construct on how to understand resuscitation:
 - Start early- (give antibiotics)
 - Correct hypovolemia
 - Restore perfusion pressure
 - And in some cases a little more may be required..!
- These concepts are as important today as they ever were.

Sepsis and septic shock are medical emergencies and we recommend that treatment and resuscitation begin immediately.

Best Practice Statement

Diagnosis

- **We recommend that appropriate routine microbiologic cultures (including blood) be obtained before starting antimicrobial therapy in patients with suspected sepsis and septic shock if doing so results in no substantial delay in the start of antimicrobials. (Best Practice Statement)**
 - **Remarks: Appropriate routine microbiologic cultures always include at least two sets of blood cultures (aerobic and anaerobic).**

Antibiotics

- **We recommend that administration of IV antimicrobials be initiated as soon as possible after recognition and within 1 h for both sepsis and septic shock.**

(Strong recommendation, moderate quality of evidence).

- **We recommend empiric broad-spectrum therapy with one or more antimicrobials to cover all likely pathogens.**

(Strong recommendation, moderate quality of evidence).

Source Control

- **We recommend that a specific anatomic diagnosis of infection requiring emergent source control be identified or excluded as rapidly as possible in patients with sepsis or septic shock, and that any required source control intervention be implemented as soon as medically and logistically practical after the diagnosis is made.**

(Best Practice Statement).

Initial Resuscitation

- **We recommend that in the resuscitation from sepsis-induced hypoperfusion, at least 30ml/kg of intravenous crystalloid fluid be given within the first 3 hours.**

(Strong recommendation, low quality of evidence)

- **We recommend that following initial fluid resuscitation, additional fluids be guided by frequent reassessment of hemodynamic status.**

(Best Practice Statement)

Fluid Therapy

- **We recommend crystalloids as the fluid of choice for initial resuscitation and subsequent intravascular volume replacement in patients with sepsis and septic shock**

(Strong recommendation, moderate quality of evidence).

- **We suggest using albumin in addition to crystalloids when patients require substantial amounts of crystalloids**

(Weak recommendation, low quality of evidence).

Vasoactive agents

- **We recommend norepinephrine as the first choice vasopressor**

(Strong recommendation, moderate quality of evidence).

- **We suggest adding either vasopressin (up to 0.03 U/min) or epinephrine to norepinephrine with the intent of raising MAP to target, or adding vasopressin (up to 0.03 U/min) to decrease norepinephrine dosage.**

(Weak recommendation, low quality of evidence)

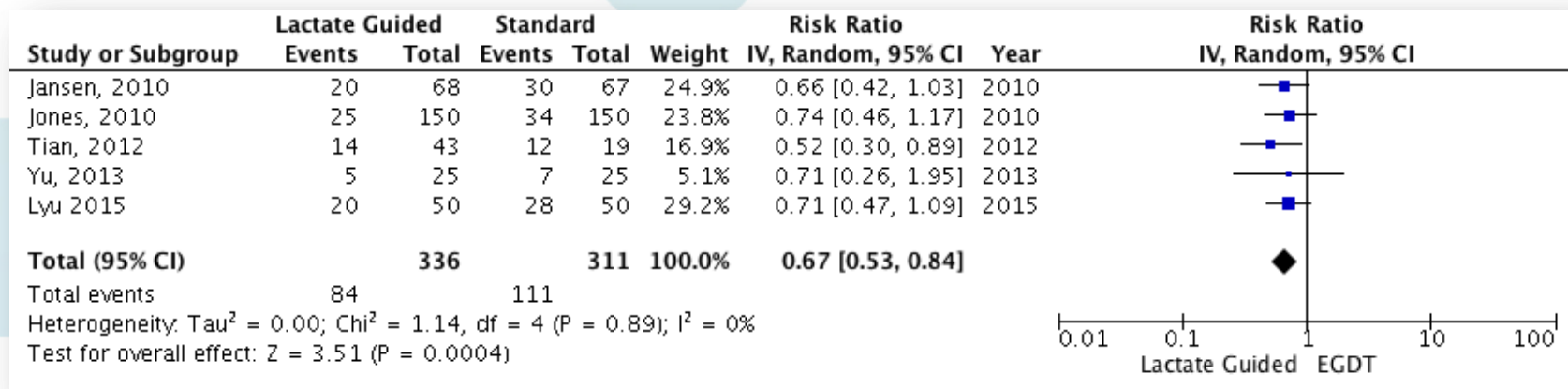
If shock is not resolving quickly.....

- **We recommend further hemodynamic assessment (such as assessing cardiac function) to determine the type of shock if the clinical examination does not lead to a clear diagnosis.**
(Best Practice Statement)
- **We suggest that dynamic over static variables be used to predict fluid responsiveness, where available.**

(Weak recommendation, low quality of evidence)

Lactate can help guide resuscitation

- We suggest guiding resuscitation to normalize lactate in patients with elevated lactate levels as a marker of tissue hypoperfusion.
(Weak recommendation; low quality of evidence)



Summary

- Screen patients for sepsis
- Start resuscitation early with source control, intravenous fluids and antibiotics.
- Frequent assessment of the patients' volume status is crucial throughout the resuscitation period.
- We suggest guiding resuscitation to normalize lactate in patients with elevated lactate levels as a marker of tissue hypoperfusion.

Thank You!

E•QUAL

EMERGENCY
QUALITY
NETWORK

TCPi

Transforming Clinical
Practices Initiative

 American College of
Emergency Physicians®

ADVANCING EMERGENCY CARE 



CPIA credit and Participation in Sepsis Wave II

Medium Value Activities (10 points each) Participation in EQUAL should satisfy

<p>Adopt a formal model for quality improvement and create a culture in which all staff actively participates in improvement activities that could include one or more of the following: Train all staff in quality improvement methods; Integrate practice change/quality improvement into staff duties; Engage all staff in identifying and testing practices changes; Designate regular team meetings to review data and plan improvement cycles; Promote transparency and accelerate improvement by sharing practice level and panel level quality of care, patient experience and utilization data with staff; and/or Promote transparency and engage patients and families by sharing practice level quality of care, patient experience and utilization data with patients and families.</p>	<p>As part of EQUAL, participating EDs can adopt a formal model of quality improvement and create a culture in which all staff actively participate in quality improvement.</p>	<p>IA_PSPA _19</p>
<p>Use decision support and standardized treatment protocols to manage workflow in the team to meet patient needs.</p>	<p>EQUAL Activities measure implementation of clinical decision support.</p>	<p>IA_PSPA _16</p>
<p>Measure and improve quality at the practice and panel level that could include one or more of the following: Regularly review measures of quality, utilization, patient satisfaction and other measures that may be useful at the practice level and at the level of the care team or MIPS eligible clinician or group(panel); and/or Use relevant data sources to create benchmarks and goals for performance at the practice level and panel level.</p>	<p>Participants in EQUAL will measure and compare their practice.</p>	<p>IA_PSPA _18</p>

Medium Value Activities (10 points each)

Additional Work Needed to satisfy

<p>Engage patients and families to guide improvement in the system of care.</p>	<p>EQUAL participants will set up a patient family engagement committee for their ED and engage the committee on one learning collaborative topic: sepsis, imaging, or chest pain.</p>	<p>IA_BE_14</p>
<p>Build the analytic capability required to manage total cost of care for the practice population that could include one or more of the following: Train appropriate staff on interpretation of cost and utilization information; and/or Use available data regularly to analyze opportunities to reduce cost through improved care.</p>	<p>EQUAL participant EDs will do one or more of the following : provide staff training of all clinicians on imaging costs, electronic distribution of imaging utilization benchmarking reports from EQUAL.</p>	<p>IA_PSPA_17</p>
<p>Ensure full engagement of clinical and administrative leadership in practice improvement that could include one or more of the following: Make responsibility for guidance of practice change a component of clinical and administrative leadership roles; Allocate time for clinical and administrative leadership for practice improvement efforts, including participation in regular team meetings; and/or Incorporate population health, quality and patient experience metrics in regular reviews of practice performance.</p>	<p>EQUAL EDs that allocate administrative time for QI efforts such as EQUAL and have established QI programs used to satisfy EQUAL aims.</p>	<p>IA_PSPA_20</p>
<p>Ensure full engagement of clinical and administrative leadership in practice improvement that could include one or more of the following: Make responsibility for guidance of practice change a component of clinical and administrative leadership roles; Allocate time for clinical and administrative leadership for practice improvement efforts, including participation in regular team meetings; and/or Incorporate population health, quality and patient experience metrics in regular reviews of practice performance.</p>	<p>As part of all learning collaborative ED clinical and administrative leaders will be engaged in practice improvement.</p>	<p>IA_PSPA_20</p>

High Value Activities (20 points each) Additional Work Needed to satisfy

<p>Participation in the CMS Transforming Clinical Practice Initiative.</p>	<p>EQUAL participants will join a CMS TCPI Practice Transformation Network (PTN) and complete all EQUAL activities as well as additional surveys and projects identified locally by the PTN</p>	<p>IA_CC_4</p>
<p>Build the analytic capability required to manage total cost of care for the practice population that could include one or more of the following: Train appropriate staff on interpretation of cost and utilization information; and/or Use available data regularly to analyze opportunities to reduce cost through improved care.</p>	<p>EQUAL participant EDs will do one or more of the following : provide staff training of all clinicians on imaging costs, electronic distribution of imaging utilization benchmarking reports from EQUAL.</p>	<p>IA_PSPA_17</p>
<p>Ensure full engagement of clinical and administrative leadership in practice improvement that could include one or more of the following: Make responsibility for guidance of practice change a component of clinical and administrative leadership roles; Allocate time for clinical and administrative leadership for practice improvement efforts, including participation in regular team meetings; and/or Incorporate population health, quality and patient experience metrics in regular reviews of practice performance.</p>	<p>As part of all learning collaborative ED clinical and administrative leaders will be engaged in practice improvement.</p>	<p>IA_PSPA_20</p>

How to use the E-QUAL Portal and submit Activity 2